

CHINNOR & PRINCES RISBOROUGH RAILWAY

Timetable 2011

FARES HELD
FOR 2011



THE ICKNIELD LINE

THE QUINTESSENTIAL COUNTRY BRANCH LINE

TALKING TIMETABLE - 01844 353535

www.chinnorrailway.co.uk

The Icknield Line's Scenic Highlights

The journey starts at Chinnor station when the train sets off for the seven-mile round trip by passing under Station Road, then rising gently through the outskirts of Chinnor village to Keens Lane. This is known locally as Donkey Lane due to the donkeys who, in the 1930s, used to bring the beech chair legs down from the woods where they had been made for onward transportation to High Wycombe. Views now open up on both sides of the line. To the right, a footpath parallels the Upper Icknield Way - a green lane that pre-dates the Romans; William the Conqueror travelled along it on his way from Hastings to London. The line now descends to Wainhill Crossing and the restored Halt which is no longer open to passengers. The original crossing keeper's cottage, now privately owned, is on the right.



3



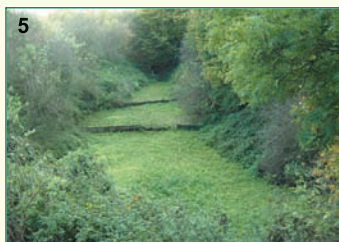
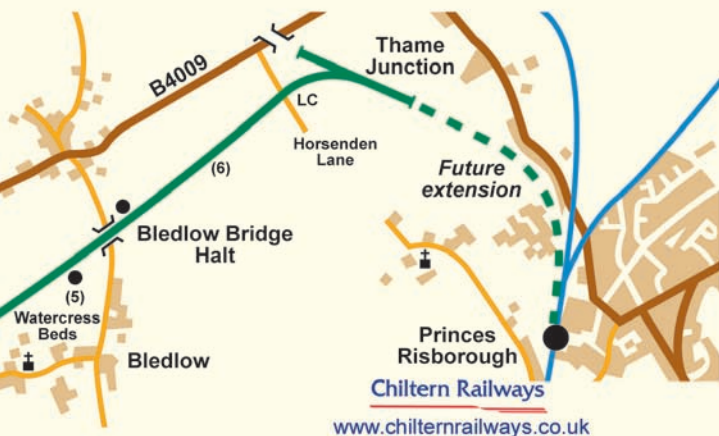
4

Front cover - Locomotive No. 5786 whose home base is South Devon Railway at Buckfastleigh.



2

This crossing is manned when passenger trains are running and the train will slow down or even stop unless a green flag is being shown by the gateman. After crossing the roadway, a stud farm can be seen immediately to the right and, to the left, just after some poplar trees, is a small pond where a Roman villa once stood. The line continues down through a cutting to Bledlow Cricket Club where matches can be seen most Sunday afternoons. After crossing West Lane Bridge there are watercress beds to the right just before Perry Lane Bridge. As the train crosses this bridge, the now closed rail level Bledlow Bridge Halt can be seen on the left. There are now good views across open fields to both sides of the train and on a clear day Whiteleaf Cross can be seen on the right, etched into the chalk hillside above the town of Princes Risborough. Its origins date back to the middle ages, and it is



thought to have been a guide for the old salt route from Droitwich, near Worcester, on the way to the Thames and London. The train crosses Horsenden Lane and proceeds round the corner to Thame Junction and the end of the line. The train will now stop while the engine runs round the coaches and attaches to the other end, ready for the return journey. The line here continues for approximately half a mile to Princes Risborough station, which the Railway hopes to reach in the not too distant future, subject to raising the necessary funds and achieving agreement with Network Rail.



SPECIAL EVENTS 2011

April 3rd - MOTHER'S DAY

Mums travel **FREE** when accompanied by a fare paying passenger and receive a complimentary posy of flowers
All Trains Steam Hauled.



April 22nd to 25th - EASTER SPECIALS

Refreshments for all including a chocolate egg for children and a hot cross bun for adults. Easter chick hunt.
All Trains Steam Hauled.



May 21st - RAILWAY OPEN DAY

Why not come down and see behind the scenes? Ever looked at a diesel engine compartment? See how the signals work, how the railway operates and lots more.
Special Timetable will apply.



May 28th to 30th - TEDDY BEAR DAYS

Each child carrying a Teddy Bear will travel **FREE** when accompanied by a fare-paying adult.
Plus entertainment for the children.
Saturday 28th May Diesel Service all day.



WILDLIFE ON THE MOVE

Journey on the Icknield Line and discover the local wildlife. Commentary en route given by Chilterns Conservation Board volunteers. Trains will operate Saturdays on dates to be arranged.



Visit our website or phone the Talking Timetable for details.

EVENING EVENTS FOR 2011

May 14th, July 9th, August 20th
and September 10th

MURDER MYSTERY DINING TRAIN

Sherlock Holmes murder mystery evening with mixer quiz, prizes and certificates for the winners. Evening includes a 3 course meal served by our stewards on board the steam train.

June 11th, July 23rd and October 8th
FISH AND CHIP QUIZ EVENINGS

A general knowledge quiz whilst travelling on board the steam train. Fish and chip supper included in the evening.

Evening events start at 7.00pm.

For more details on our evening events or to book

Telephone 07979 055366



SPECIAL EVENTS 2011



June 5th - STEAM AND DIESEL GALA

All available steam and diesel locomotives will be in operation throughout the day.

Special timetable will apply. Free Bus Service between Princes Risborough Station and Chinnor.

June 19th - FATHER'S DAY

Dads travel **FREE** when accompanied by a fare-paying passenger.

Free Bus Service between Princes Risborough Station and Chinnor.

July 17th - SENIOR CITIZENS DAY

All senior citizens travel **half price**.

August 7th - ANNUAL GALA DAY

All available steam and diesel locomotives will be in operation throughout the day.

Special timetable will apply. Free Bus Service between Princes Risborough Station and Chinnor.



August 27th to 29th - TEDDY BEAR DAYS

Each child carrying a Teddy Bear will travel **FREE** when accompanied by a fare-paying adult.

Plus entertainment for the children.

Saturday 27th August Diesel Service all day.



October 2nd - SENIOR CITIZENS DAY

All senior citizens travel **half price**.

October 30th - HALLOWE'EN SPOOKS EXPRESS

Children dressed in Hallowe'en costume will receive a present.

All Trains Steam Hauled.



SANTA SPECIALS

DECEMBER

3rd, 4th, 10th, 11th,
17th, 18th and 24th

Children receive a present from Father Christmas and adults receive seasonal refreshments.



Seats bookable in advance.
See Santa Leaflet for details.

CAROL EVENING

Evening of traditional Christmas carols.
Departs 17th December at 7.00pm

MINCE PIE SPECIALS

Dec 27th, 31st & Jan 2nd 2012
Trains at 10.30, 12.00, 1.30 and 3.00





CHINNOR & PRINCES R

TALKING TIMETABLE - 01844 353535



The Chinnor and Princes Risborough Railway is a branch of the Great Western Railway. It is an attractive railway. From Chinnor Station the line runs along the edge of the Chiltern Hills. It passes through attractive countryside. Red kites can often be seen circling the sky. The railway has steam and diesel services running throughout the year. On occasional Saturdays from Mother's Day to the end of August. Generally tickets give unlimited travel. There are special events except for the Santa events in December. There are very popular special events throughout the year. There are well-liked evening events. See special events page. Seats for the Santa events should be booked in advance. For all other events just turn up and go!

PASSENGER OPERATIONS

	T	W	T	F	Sa	Su	M	T	W	T	F	Sa	Su	M	T	W	T
MARCH	1	2	3	4	5	6	7	8	9	10	11	12	13	14	15	16	17
APRIL				1	2	3	4	5	6	7	8	9	10	11	12	13	14
MAY						1	2	3	4	5	6	7	8	9	10	11	12
JUNE		1	2	3	4	5	6	7	8	9	10	11	12	13	14	15	16
JULY				1	2	3	4	5	6	7	8	9	10	11	12	13	14
AUGUST							1	2	3	4	5	6	7	8	9	10	11
SEPTEMBER			1	2	3	4	5	6	7	8	9	10	11	12	13	14	15
OCTOBER					1	2	3	4	5	6	7	8	9	10	11	12	13
DECEMBER			1	2	3	4	5	6	7	8	9	10	11	12	13	14	15

STANDARD TIMETABLE

Steam and Diesel (unless otherwise stated)					
Chinnor Station - Dep	10.15	11.45	1.15	2.45	4.15

DIESEL TIMETABLE

Diesel Service Only						
Chinnor Station - Dep	10.00	11.15	12.30	1.45	3.00	4.15

SPECIAL EVENT TIMETABLE

Special event train times are as the standard timetable unless specified on the special events page. Bus service available as shown on the event pages. See separate leaflet for Santa Specials available from October.



EVENING EVENTS

See evening event details on special events page.



Chinnor Railway is a friendly branch line in the style of the former Great Western Railway, operated for tourists, families and enthusiasts alike. Travelling from Chinnor to Princes Risborough, the line runs through the foot of the Chiltern Hills parallel to the historic Icknield Way. The railway is a scenic route with some outstanding views across the Vale of Whiteleaf. The line is operated by steam and diesel traction. The railway is open most Sundays and Bank Holiday Mondays until Hallowe'en. Tickets are available on day of purchase, or by advance purchase. We run a number of special events throughout the year including our Christmas events page for details. Tickets should be booked in advance. For more information, please visit our website.



OPERATING DAYS 2011 *(cream teas available on circled dates)*

F	Sa	Su	M	T	W	T	F	Sa	Su	M	T	W	T	F	Sa	Su	M	T	W
18	19	20	21	22	23	24	25	26	27	28	29	30	31						
15	16	17	18	19	20	21	22	23	24	25	26	27	28	29	30				
13	14	15	16	17	18	19	20	21	22	23	24	25	26	27	28	29	30	31	
17	18	19	20	21	22	23	24	25	26	27	28	29	30						
15	16	17	18	19	20	21	22	23	24	25	26	27	28	29	30	31			
12	13	14	15	16	17	18	19	20	21	22	23	24	25	26	27	28	29	30	31
16	17	18	19	20	21	22	23	24	25	26	27	28	29	30					
14	15	16	17	18	19	20	21	22	23	24	25	26	27	28	29	30	31		
16	17	18	19	20	21	22	23	24	25	26	27	28	29	30	31	1	2	3	

2011 FARES

Adult	£9.00	Child (3-15yr)	£4.50
Senior Citizens	£8.00	Infants (0-2yr)	Free
Family (2+2)	£22.50		

Well behaved dogs welcome and travel FREE

Tickets are valid for unlimited travel on day of purchase. Passengers can ONLY board trains at Chinnor Station (approx. 7 mile round trip).



Steam Train



Diesel or D.M.U. Train

GENERAL INFORMATION

REFRESHMENTS: Light refreshments are served in our historic Cambrian Coach at Chinnor Station. The Railway has a Buffet Car on most services subject to availability.



SOUVENIRS: Our well stocked gift shop, located in our station building, has a good range of books, toys, gifts and souvenirs.

Every effort will be made to provide the services shown, but the Company reserves the right to substitute diesel power if necessary, and to alter or cancel the timetable without prior notice and accepts no liability for any loss or inconvenience caused.

RAILWAY BACKGROUND

The Chinnor and Princes Risborough Railway Association was founded in August 1989 with the aim of preserving the four mile branch line from Princes Risborough to Chinnor, which was closed by British Rail in January 1990.

Built in 1872, the line was built and owned by the Watlington and Princes Risborough Railway Company until being taken over by the Great Western Railway in 1883.

The last passenger train ran over the line in 1957. However, the branch remained open to goods traffic until 1961, after which the section beyond Chinnor (to Watlington) was closed and the track lifted. The section between Princes Risborough and Chinnor was retained to serve the former Chinnor cement works. However the last coal train to Chinnor ran in December 1989 and the line was then declared non-operational.

The Chinnor and Princes Risborough Railway Association purchased the line and operates a preserved railway, recreating the atmosphere of a Great Western Railway branch line from 'days gone by'.

Since formation in August 1989, the Association has attracted over a thousand members. Its first passenger carrying operations were in August 1994 and it has since undertaken many projects including rebuilding the station building.



The railway is run entirely by its volunteers and this requires many varied duties, including train stewards, gatekeepers, catering staff, booking clerks etc., as well as the train crews. Full training is available to members of the railway who wish to volunteer for the various duties, whether it be for train crew, customer service roles or other. There are also many activities in which members can become involved including the maintenance of locomotives and carriages, signalling projects, maintenance of the Permanent Way and general fund-raising for the railway.

If you would like to join the Association then please send the form opposite to our Membership Secretary at the address shown.

The future of the C&PRRA is in the hands of its members – be a part of this exciting railway preservation project.

Why not join us now!

FOOTPLATE EXPERIENCE COURSES

The experience of a lifetime, the chance to realise a lifelong ambition to drive a steam or diesel train.

The Chinnor and Princes Risborough Railway is holding a series of steam and diesel locomotive driving experience days from March to October 2011.

Learn how to control a powerful steam or diesel locomotive along the picturesque but challenging 'Icknield Line'. Climb the 1 in 68 bank from Wainhill to Chinnor. Listen to the bark of the steam locomotive or the growl of the diesel as it responds to your hands on the regulator. Find out how to bring the train to a gentle stop at the correct place along the platform.

STEAM DRIVER EXPERIENCE

A morning or afternoon on the footplate with your fully qualified steam locomotive driver and fireman who will look after you at every step and whistle.

Includes:

- Safety briefing – How to be safe on the railway.
- Introduction on how to drive a steam locomotive.
- Hands on experience on a steam locomotive footplate for each person, driving a steam hauled train over the complete length of the 'Icknield Line'.
- Approximately 4 hours starting at 09.00 or 14.00.
- One year's free membership of the C&PRRA.
- Presentation folder including certificate.
- Refreshments and lunch in the Cambrian Buffet at Chinnor Station, plus guests at special rates.

SILVER EXPERIENCE

For an all inclusive price of **£375** per person sharing the footplate with one other participant.

GOLD EXPERIENCE

For an all inclusive price of **£700** with one to one tuition.

Terms and conditions on application.



DIESEL DRIVER EXPERIENCE

A morning or afternoon on the footplate with your fully qualified diesel driver and secondman who will look after you at every step and hoot.

Includes:

- Safety briefing – How to be safe on the railway.
- Tour of the engine room.
- Basic training on driving techniques
- Hands on experience on a diesel footplate for each person, driving a diesel hauled train over the complete length of the 'Icknield Line'.
- Approximately 4 hours starting at 09.00 or 14.00.
- One year's free membership of the C&PRRA.
- Presentation folder including certificate.
- Refreshments and lunch in the Cambrian Buffet at Chinnor Station, plus guests at special rates.

SILVER EXPERIENCE

For an all inclusive price of **£225** per person sharing the footplate with one other participant.

GOLD EXPERIENCE

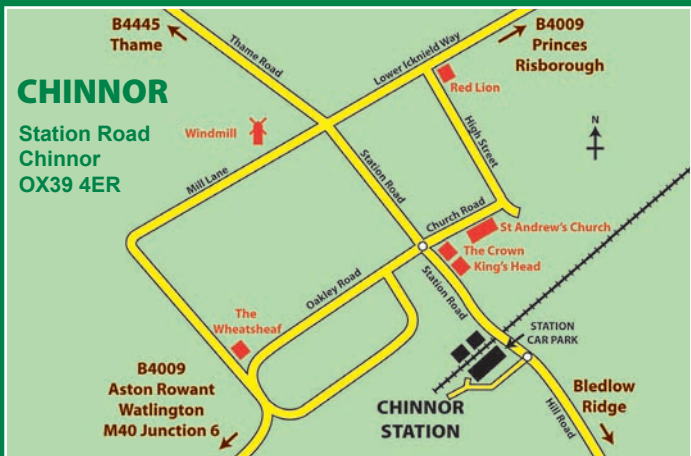
For an all inclusive price of **£410** with one to one tuition.

Terms and conditions on application.

To book your place or obtain further details telephone our experience day organiser on 07784 189322 or visit our website: www.chinnorrailway.co.uk. All dates and times are subject to availability.

As steam and diesel experiences make ideal presents, we are now offering gift vouchers for sale. For more details telephone our experience day organiser on **07784 189322**.





The railway is situated in Station Road, Chinnor just off the B4009. Junction 6 of the M40 is just over 3 miles away and Princes Risborough some 4 miles further along the B4009. Once in Chinnor follow the brown tourist signs to the railway.

GENERAL RAILWAY ENQUIRIES

For general enquiries such as birthday parties (both adults and children's*), train hire charges, party booking rates, film and television hire, coach parties or group outings:-

Telephone: 07979 055366

* Food boxes available for children's parties.

COFFEE AND CREAM

On our coffee morning train sit and relax and enjoy a pot of coffee served at your table with a selection of biscuits whilst travelling through the countryside. Coffee and biscuits are served on our 11.45 departure on the same dates as cream teas.

AFTERNOON CREAM TEAS

The railway offers superb cream teas on many of the afternoon steam hauled services where circled on the Operating Days calendar in this timetable. **8** **15**

Steam Railway reporter George Pembroke wrote:-

'The cream tea is the best on-train catering item offered on normal service trains I have sampled since this series began, and is highly recommended'



Cream teas and coffee mornings are available on some standard Sunday timetable days, Mother's Day, Father's Day and Senior Citizen Days. To book for Cream Teas or Coffee and Cream

Telephone: 07979 055366

CHINNOR CAMBRIAN BUFFET

Light refreshments are available all day in our historic Cambrian railway coach, situated on Chinnor platform, serving teas, coffees, home made cakes, snacks, light lunches and sandwiches throughout the day. Open every Sunday March to October from 10.00. Why not just pop in for a cup of tea and a snack?